

[Manage Your Subscription and Profile](#)[Share](#)[View Previous Issues](#)

Like 0

# THAILAND PRAYER UPDATE

Issue 2

February 2012



## National Data

as of January 2012

Population

**63,878,255**

Christians

**372,251**

Churches

**4,244**

Percent Protestant Christian

**0.58%**

Annual Growth Rate of Thai Church

**5.22%**

Number of new church members during the past four years.

**68,573**

In the past four years **33.19%** of all new church members for the whole country came from the province of Chiangmai

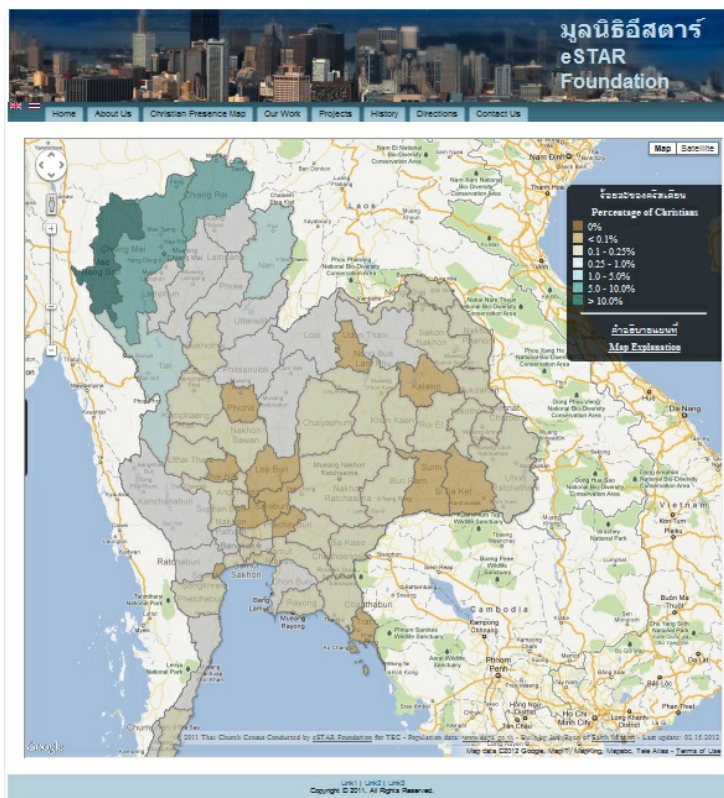
In the past four years **9.22%** of all new church members for the whole country came from the city of Chiangmai

Percent of the national population living in Chiangmai

**2.57%**

### What is a Church\*?

A church is three or more Christian believers meeting together on a



Dear Fellow Christian,

In January 2012 we completed the 2011 Census of the Church in Thailand. In this email we will share with you some of the findings from the census.

But, first we want to let you know about a new website we have developed to help you research information about the Thai church on your own. The picture above shows what the website looks like.

By clicking on this link, [Christian Presence Map](#), you be taken to it. This online map utilizes Google Maps technology which allows you to scroll the map around and zoom in and out by using your mouse. When you click into a geographical area, a pop-up is displayed showing information about that area. In the pop-up, there are links to navigate to district or sub-district levels. There is also a tab on the left side of the screen to show information on a national level.

A quick overview of the national data shows that over 57% of all Christians live in the North. In fact 51% are from the provinces of

regular basis to worship God and is not a cell group of a larger church body.

\*only Protestant churches

### How we count Christians?

Of course God is the final judge. For our purposes we count Christians as anyone who is a member of a church. No matter if it is a large city church or a small house church.

**Note:** You are receiving this email because of your love and interest for the country of Thailand. The purpose of this email is to provide you with information to know how to pray specifically for this nation and to help you make informed ministry plans. We encourage you to share this email with members of your church, your small group, your social media network and among your Christian friends so they too can pray.

Please [click here](#) to email us your prayer requests, comments and updates

Email prepared by eStar Foundation.



Email supported by



Chiangmai, Chiangrai and Mae Hong Son alone.

We can praise the Lord that the fastest yearly growth rate is occurring in the East. However, the fewest percentage of all Christians in the country live there.

The region that needs a lot of prayer is the Northeast. One-third of the county's population is in this region and it has the slowest growth rate. Only one out of every 630 citizens in the Northeast is a Christian.

Region	%All Christians	Yearly Growth Rate	Population per Christian
West	16.67%	5.25%	191
Central	9.69%	6.14%	293
East	2.49%	8.98%	471
Northeast	9.20%	3.13%	630
South	4.53%	6.98%	557
North	57.42%	5.13%	29

The next email will share additional information about the church.

If there is something you would like to see, we welcome your comments and suggestions. Please send us praises and prayer requests from your province or area of ministry. We will try to include them in upcoming emails.

For God's Glory,

Dwight Martin  
Research Coordinator  
Thailand Evangelism & Church Growth Committee



★ **This is a Test Email only.**

This message was sent for the sole purpose of testing a draft message.